

Diagnosis Please

Tamra L. Heimert, BA
Doris D. M. Lin, MD, PhD
David M. Yousem, MD

Case 48¹

HISTORY

A 36-year-old African-American woman who had a history of fluctuating bilateral mixed hearing loss that was worse on the left side than on the right complained of worsening of hearing on the right side during follow-up. At physical examination, she was a short obese woman who was wheelchair bound. The scleras were discolored. The tympanic membranes were intact.

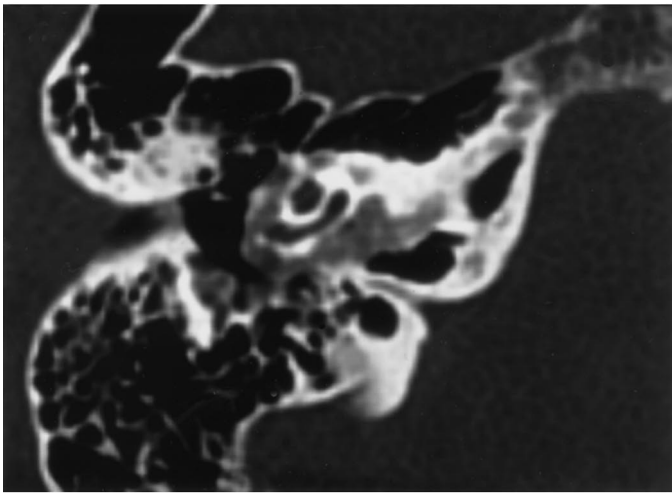
Audiogram findings demonstrated profound hearing loss on the left side and moderately severe mixed conductive and sensorineural hearing loss on the right side. In the past, she had fluctuations in her hearing with overall progressive deterioration; steroid treatment was unsuccessful. Unenhanced computed tomographic (CT) scans of the petrous temporal bones were obtained with a bone algorithm. Transverse (Figure, parts a and b) scans of the right side and coronal (Figure, parts c and d) scans of both sides are provided.

Index term:
Diagnosis Please

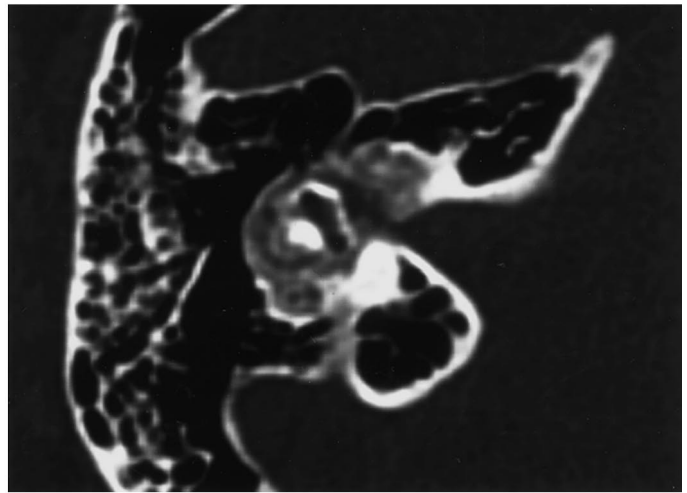
Published online before print
10.1148/radiol.2223001706
Radiology 2002; 222:742–743

¹ From the Flinders University of South Australia (T.L.H.); and Department of Radiology and Radiological Science, Neuroradiology Division, Johns Hopkins Hospital, 600 N Wolfe St, Baltimore, MD 21287 (D.D.M.L., D.M.Y.). Received October 24, 2000; revision requested December 6; revision received February 28, 2001; accepted March 16. **Address correspondence** to D.D.M.L. (e-mail: ddmlin@jhmi.edu).
© RSNA, 2002

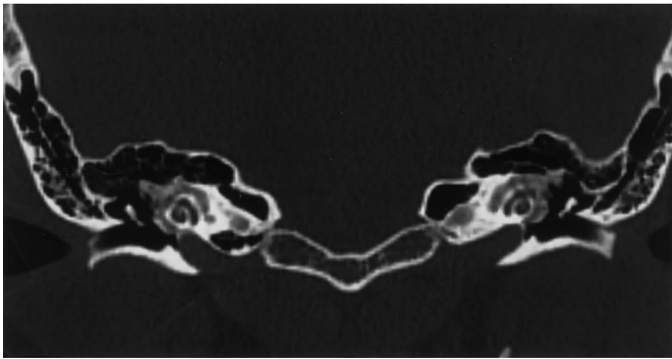
E-mail the most likely diagnosis to dxplease@rsna.org (use **only** for submission of diagnosis). Include case number, your name (as you would want it to appear in the journal), address, phone and fax numbers. Only one case, one name, and one diagnosis per e-mail submission. Multiple diagnoses, multiple submissions, submissions without a case number will not be considered. **Deadline:** May 15. Answer will appear in the July issue. Authors wishing to submit cases for Diagnosis Please should first write to the Editor to obtain approval for the case and further information.



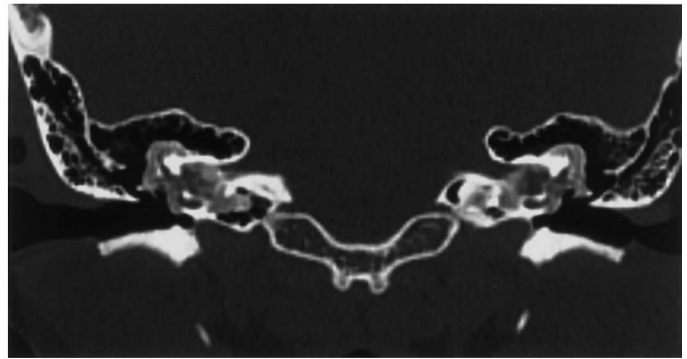
a.



b.



c.



d.

One-millimeter-thick CT scans of petrous temporal bones. (a, b) Transverse scans depict the right side and (c, d) coronal scans depict both sides.